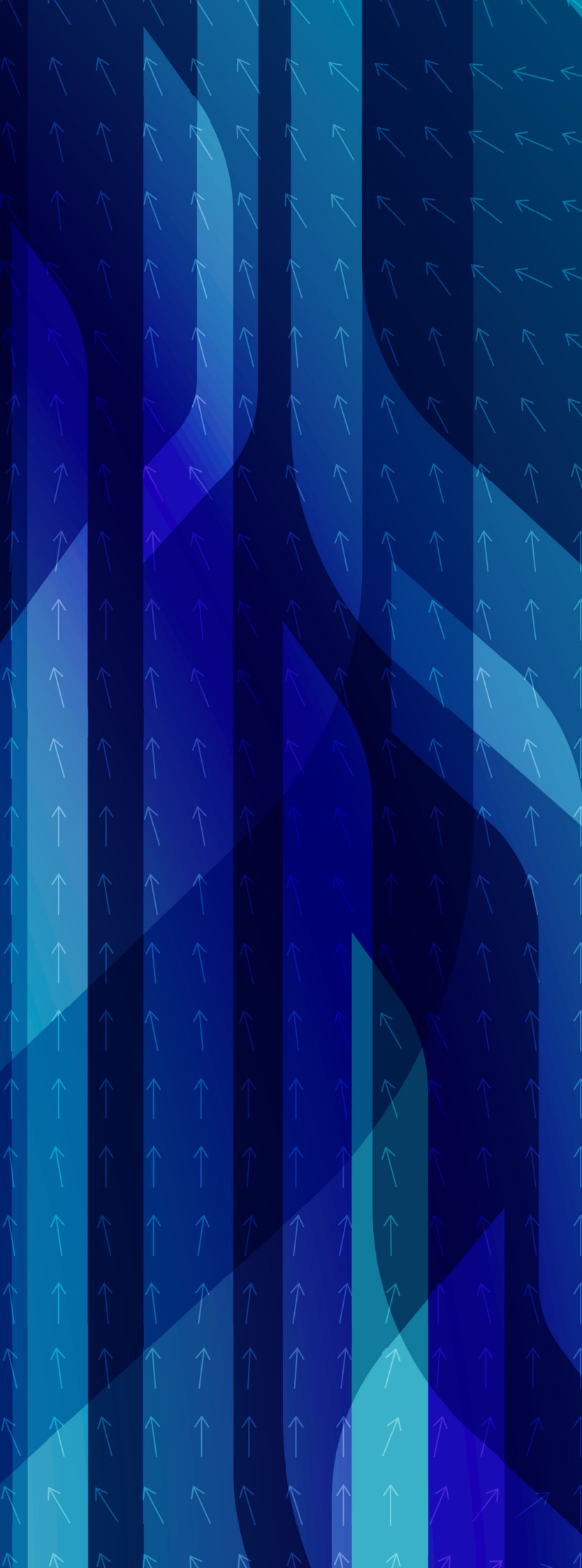




EMKOMETER

FLOW METERS AND LEVEL INDICATORS



EMKOMETER s.r.o.

Na Žižkově 1245
58401

Ledeč nad Sázavou
CZECH REPUBLIC

 +420 569 721 549

 +420 569 726 416

info@emkometer.cz
www.emkometer.cz

Individual solutions for global markets

The EMKOMETER company

Over the last 30 years, we have seen rapid development in field instrumentation. We are excited to be a part of this evolution. State of the art technology is helping our customers to optimize their processes, improve control, maximize safety and sustainability.



Jiří Kroužek

founder of the company

It has been long since we got involved in measurement of flow and level. We are aware of how important these measurements are to our customers. They are often directly affecting overall performance of the processes.

Our products are designed using the best available materials and technology. With focus on detail we always ask how to do it better. Short time profit is not the priority. We are happy to see that some of our products are still in operation after 20+ years and customers are coming back.

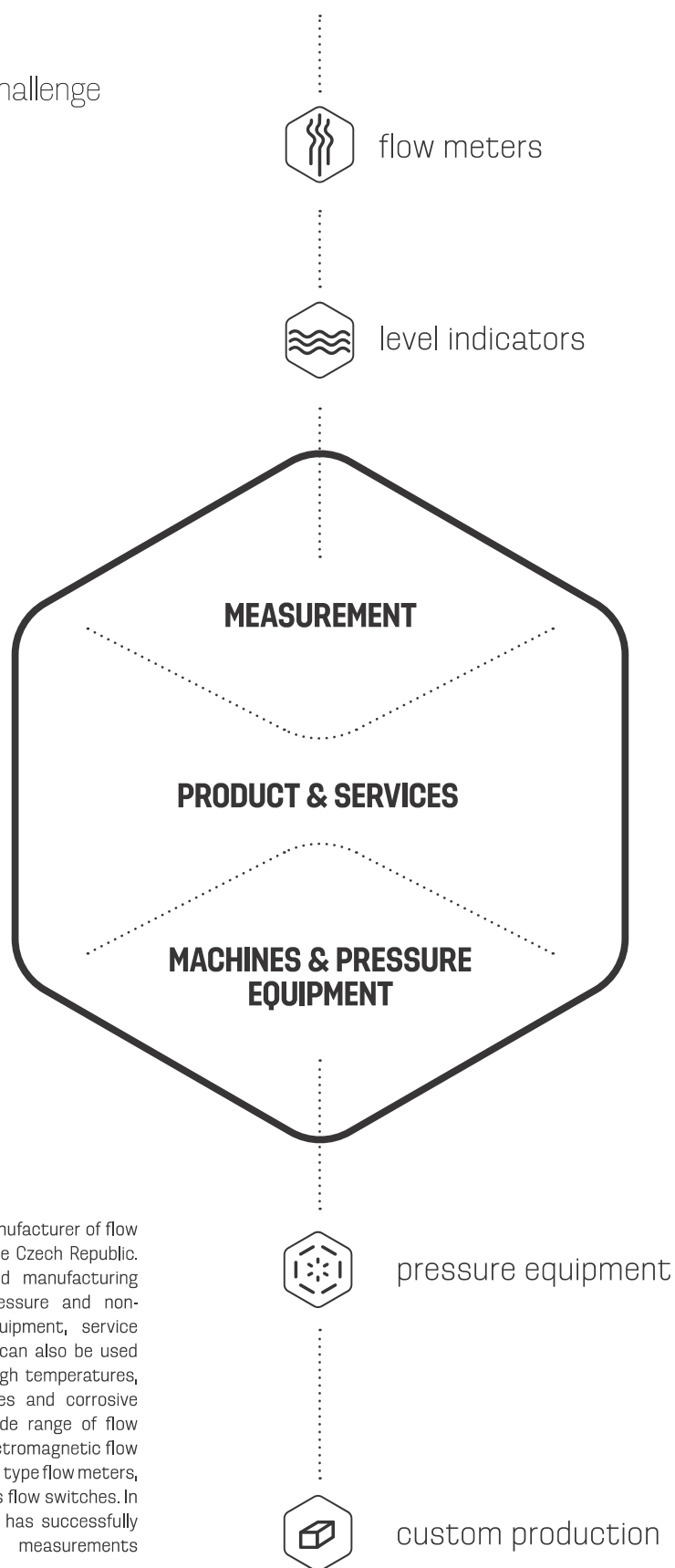
We are thinking in long term. Regarding products, relationships and company development. In house R&D, production and sale support provides unique flexibility hardly to be found anywhere else. Our company was established by Mr. Jiří Kroužek in Czech Republic in 1990. It is independent family operated company with worldwide presence and references.

Bespoke products and solutions have always been an advantage. Many of them became standard in the course of time and we are pleased to offer wide range of products and services nowadays.

products & services

company portfolio

Your needs are our challenge

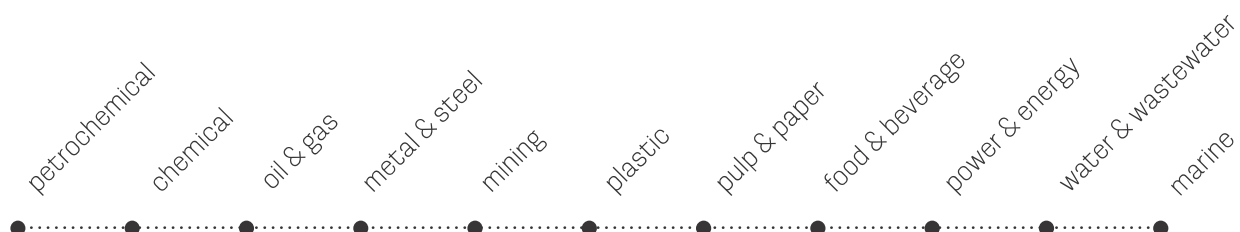


all in one place

EMKOMETER Co. is the leading manufacturer of flow meters and level indicators in the Czech Republic. We specialize in developing and manufacturing various level indicators for pressure and non-pressure vessels, pressure equipment, service and consultancy. These devices can also be used in extreme environments with high temperatures, pressures, explosive atmospheres and corrosive substances. We also offer a wide range of flow meters including rotameters, electromagnetic flow meters, spring flow meters, paddle type flow meters, orifice plates, nozzles, and various flow switches. In the past 28 years our company has successfully implemented thousands of measurements worldwide.

aplication

in industry



communication

protocol standards

4 - 20mA

HART
COMMUNICATION PROTOCOL

PROFI
BUS

Modbus

FOUNDATION

competency

approvals & certification

ČSN EN ISO 3834 - 2 : 2006

ČSN EN ISO 9001 : 2009

ČSN EN ISO 14001 : 2005

2014 / 68 / EU

MODUL H I-61 - 2524 / 15 / TZ

FTZÚ 05 ATEX 0266

FTZÚ 02 ATEX 0453X

FTZÚ 02 ATEX 0454X

FTZÚ 02 ATEX 0455X

FTZÚ 05 ATEX 0017X

FTZÚ 11 ATEX 0193X

FTZÚ 09 ATEX 0001X

TCM 142/14 - 5187

CERTIFIKÁTY:

GOST, EAC, DIN, ASME





LEVEL

level indicators

Complex portfolio of instruments for level measurement of liquids and solids.

There are numerous applications requiring different parameters. It is possible to measure level of virtually any liquids, solids or interfaces using the right method.

There is a number of simple local indicators that can be easily extended by a variety of accessories. Specialized instruments feature both analog and digital communication. Safety critical applications can be covered by SIL3 certified safety limit switches.

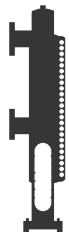
Common tasks include measurement of level of steam condensate in boilers, chemicals in process industry, sludges in wastewater and many others.

Since 1990 we have also developed number of customer specific applications that defined new standards in the field. (e.g. integrated insulation and heating of bypass level indicators)

TYPES

BYPASS

L21 | L21SR | L21S



magnetic

L21



direct

L21SR



direct tubular

L21S

INSERTION

L11 | L11M | L21/5



float

L11



magnetostrictive

L11M



displacer

L21/5

SWITCHES

H40 | NM | ECAP



float

H40



displacer

NM



eletronic

ECAP

ULTRASONIC

EMKOSONIC 60 | 43



ultrasonic

EMKOSONIC-60



ultrasonic

EMKOSONIC-43

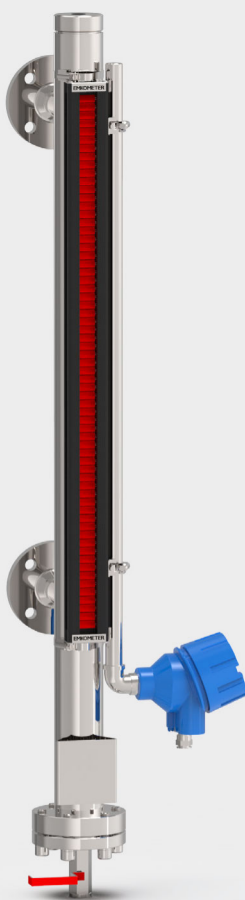
RADAR

EMKOTDR-60



radar

EMKOTDR-60



MAGNETIC L21

Have become one of the most popular indicators thanks to its reliability and modularity. Wide range of accessories includes switches, el. outputs and heating.



FLOAT L11

Float operated instrument with connection from top. Available outputs are: continuous, multi point switching, temperature.



DIRECT L21SR

Direct level indicator for rough conditions. Can be equipped with reflexive glass, transparent glass and also MICA shields and backlight.



DISPLACER L21/5

Level or density measurement based on buoyant force from well known Archimedes' principle.



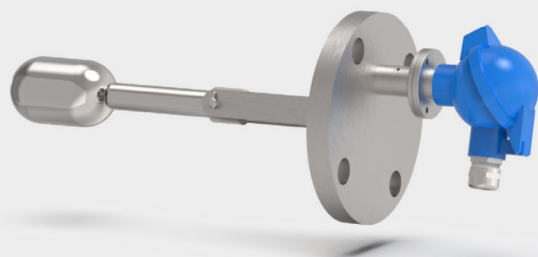
DIRECT TUBULAR L21S

Simple tubular glass indicator for temperatures up to 200°C and pressure 16 bar. Comes with stainless steel protective cover.



MAGNETOSTRICTIVE L11M

Advanced float operated level meter featuring continuous output using magnetostrictive principle. Up to 0,1 mm accuracy.



FLOAT H40

Float operated level switch with SPDT contact. Different sizes and process connections available. Can be placed in an external chamber.



DISPLACER NM

Displacer operated switch in a chamber replacing some older devices (e.g. MERTIK 650.02)



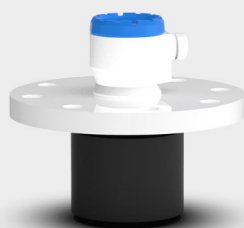
ELETRONIC ECAP

Smart electronic switch with high frequency capacitive method replacing traditional fork switches.



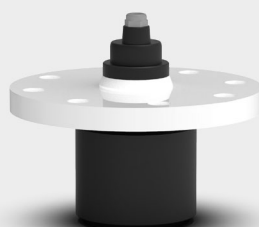
RADAR EMKOTDR-60

Guided wave radar features accuracy up to 1 mm and is largely independent on most of the fluid properties. Can be placed in bypass chamber.



ULTRASONIC EMKOSONIC-60

Advanced ultrasonic flowmeter features smart functions and user friendly local interface.



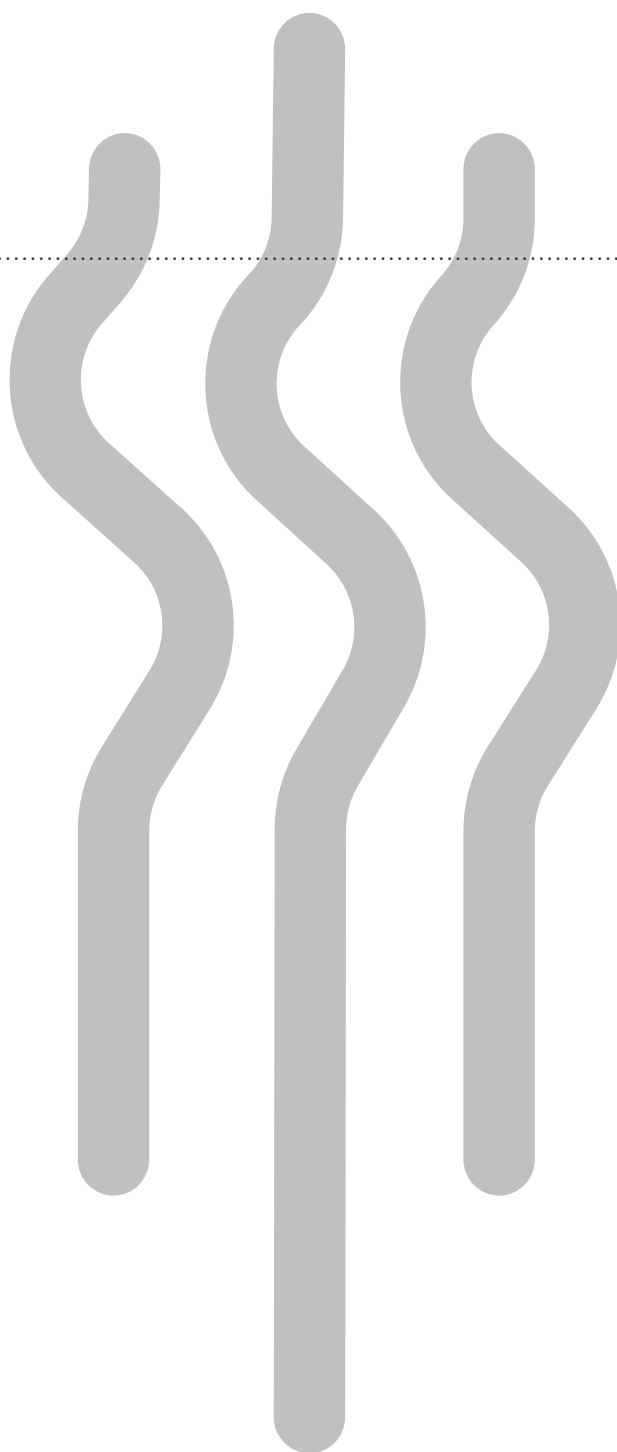
EMKOSONIC-43

Basic ultrasonic level indicator fits most of the applications. Features analog output and limit switches.



FLOW

flow meters



State of the art technology for efficient flow measurement

The techniques for precise measurement of flow are increasingly important today. Fluids being measured and the energy involved in their movement may have a high monetary value. Other related key aspects are process effectivity, safety, environmental protection and quality control.

Applications include dosing, filling, monitoring and control of various liquid across wide range of industries. Range of the instruments available is extending and selecting right method has direct impact on related costs. Therefore it is important to understand both – the process and instruments in detail. Water, steam, air, gas, chemicals or oil. There is no universal method to measure all but measuring any fluid becomes easy with right equipment. There you can rely on our instruments.

TYPES

VARIABLE AREA

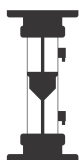
AF | BF | CF | DF | NF | Z | EZ | EF | MRB | DUG | VEP | RW | RV | P | PP | PPP | K



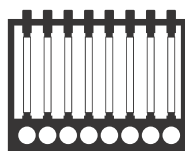
industrial
rotameter
AF | BF | CF
DF | NF



compact
rotameter
Z | EZ



plastic
rotameter
EF



regulating block
MRB



flow
indicator
DUG | VEP



flow
monitor
RW | RV



flap type
P | PP | PPP



metal
rotameter
K

ELECTROMAGNETIC

H3 | F31 | F51



flow / heat
meters
F3 | H3



flow meters
F31



battery powered
insertion
F51

ULTRASONIC

UF | UFH



flow meter /
heat meter
UF



hand held
UFH

DIFFERENTIAL PRESSURE

EC | ED | EV | MULTINOZZLE | V CONE | 4-HOLE ORIFICE



orifices
EC



nozzles
ED



venturi tube
EV



multi
nozzles



v- cone



4-hole orifice

VORTEX - THERMAL - CORIOLIS

VORTEX | THERMAL | CORIOLIS



vortex



thermal



coriolis

INDUSTRIAL ROTAMETER

AF | BF | CF | DF | NF

Flowmeters with float and glass cone are designed for measuring the volumetric or mass media flow. The flow rate is read directly on the meter.



COMPACT ROTAMETER

Z | EZ

Compact panel mount version is suitable for OEM use. Wide range of materials ensures best fit for the application. Integrated control valve allows easy flow regulation.



PLASTIC ROTAMETER

EF

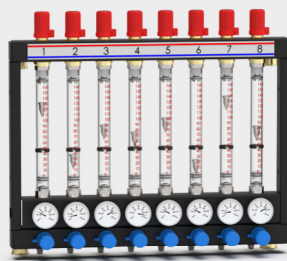
Best fit for plastic pipelines, widely used in water treatment and chemical industry. Connections to plastic flow pipe are by welding, gluing, flange or on request by a thread.



REGULATING BLOCK

MRB

Standard accessory used in cooling (heating) of compression molds for plastics. It is flow meter, thermometer and valve combined.



FLOW INDICATOR

DUG | VEP

Mechanical flow indicator with a sight glass for liquids and gases. Flow moves the piston and indicates the current flow. Various electrical output available.



FLOW MONITOR

RW | RV

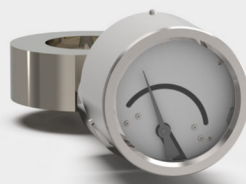
Based on variable cross section between the cone and ring to which the spring is attached. Magnet in the float actuates the sensor, switch or indicator box. For pressure up to 450 bar.



FLAP TYPE

P | PP | PPP

Paddle flowmeters are designed for flow monitoring of liquids and gases, e.g. in the cooling, tempering circuits as well as for verifying the operation of the pumps, ventilators etc.



METAL ROTAMETER

K

All-metal flow meters with float - type K are used for signaling and measuring of instant flow, total volume of fluids. Wide range of electrical outputs.





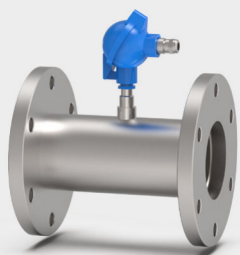
FLOW / HEAT METERS F3 | H3

Based on electromagnetic principle and equipped with temperature sensors on the input and output, heat transfer can be measured.



FLOW METERS F31

Our newest electromagnetic flowmeter featuring robust diecast casing is compatible with wide range of sensors.



FLOW METER / HEAT METER UF + SENSOR US

Suitable for non-conductive liquids. Ability to measure heat transfer. Wide range of sensors including clamp on, in line and insertion.



NOZZLES ED

Nozzles offer better reliability and lower pressure drop than orifices.



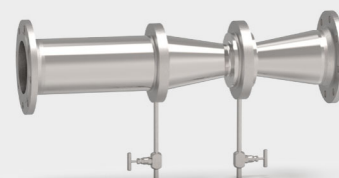
BATTERY POWERED INSERTION F51

Battery power with lifetime 5+ years and possibility of GSM communication makes it easy to measure in remote areas. Integrated temperature and pressure measurement.



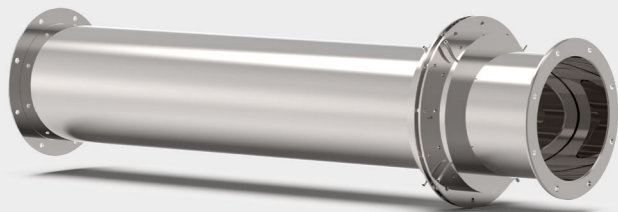
HANDHELD UFH

Battery powered, designed for instant measurements using clamp on sensors. Set comes with sensors from DN15 to DN7000.



VENTURI TUBE EV

When it comes to minimizing pressure drop, venturi tube is the best option.



ORIFICES

EC

Classical method of measurement proven over the decades and standardized. For measurement of steam, liquids and gases.



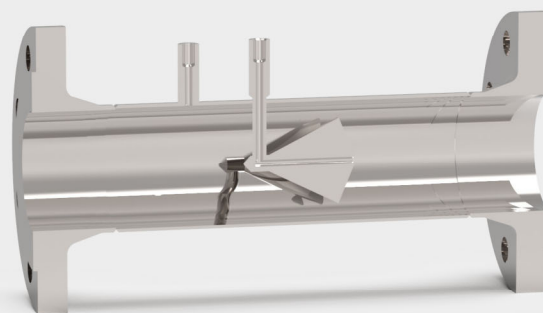
4-HOLE ORIFICE

With reduced required straight runs, multihole orifice can fit existing installation.



MULTI NOZZLE

Specialized DP elements to be used in test equipment, e.g. ISO 5801 fan testing.



V-CONE

V CONE

An advanced differential pressure element defined by ISO 5167-5 standard since 2016. Features high reliability, repeatability, accuracy and low pressure drop. It is ideal for tight-fit and retrofit installations.



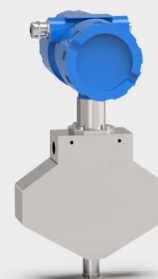
VORTEX

Vortex flowmeters are often default choice when it comes to measurement of the steam of non-conductive liquids.



THERMAL

Based on heating element pair it can be used for both liquids and gases for flow monitoring and control.



CORIOLIS

The most accurate flowmeter with astonishing response. Outputs mass flow-rate directly. Independent density measurement. Volumetric output.



TEMPERATURE

Temperature measurement products provide innovative solutions even for challenging applications.

Temperature is one of the most common types of physical measurements. You can measure temperature in various environments. Depending on the desired accuracy, range, and expense, you have several sensor options for measuring temperature. Emkometer offers a wide variety of devices for you to choose from to make temperature measurements. Many instruments nowadays have integrated temperature measurements as a secondary variable.



SENSORS

Wide range of sensors includes Thermocouples, Thermistors and RTDs. Right selection ensures precise measurement. Various process connection options.



TRANSDUCERS

Available in head mount or DIN enclosures. Analog output with optional HART® protocol, FOUNDATION Fieldbus™ or PROFIBUS PA interface.



ASSEMBLIES

Assembly consist of sensor and transducer. It comes precalibrated and enables easy plug&play installation.



PRESSURE

Precise and stable pressure measurements in virtually any environment.



SUBMERSIBLE PROBES FOR LEVEL MEASUREMENT

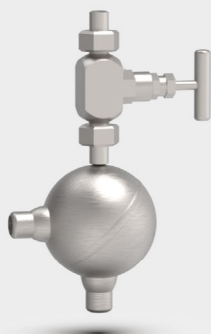
Hydrostatic submersible sensors can be used in non pressurized reservoirs as well as in drill holes and wells.



PRESSURE TRANSDUCERS

Process pressure transducer can be also used for level measurement. Suitable for gases, liquids and steam.

There are 4 types of sensors available - stainless steel silicon sensor, ceramic thick film sensor, stainless steel sensor and capacitive ceramic sensor. That gives us an advantage in choosing the one that fits best the application. Apart from pressure, we can measure level of liquids and also flow. Especially DP flow measurement methods rely on accurate differential pressure measurement.



CONDENSING CHAMBERS

Are mainly used for steam measurement.

DIFFERENTIAL PRESSURE

DP transmitters are widely used for flow measurement in combination with primary elements. Level measurement is also possible.





PRESSURE EQUIPMENT & VESSELS

From design to realization



STAINLESS STEEL TANKS

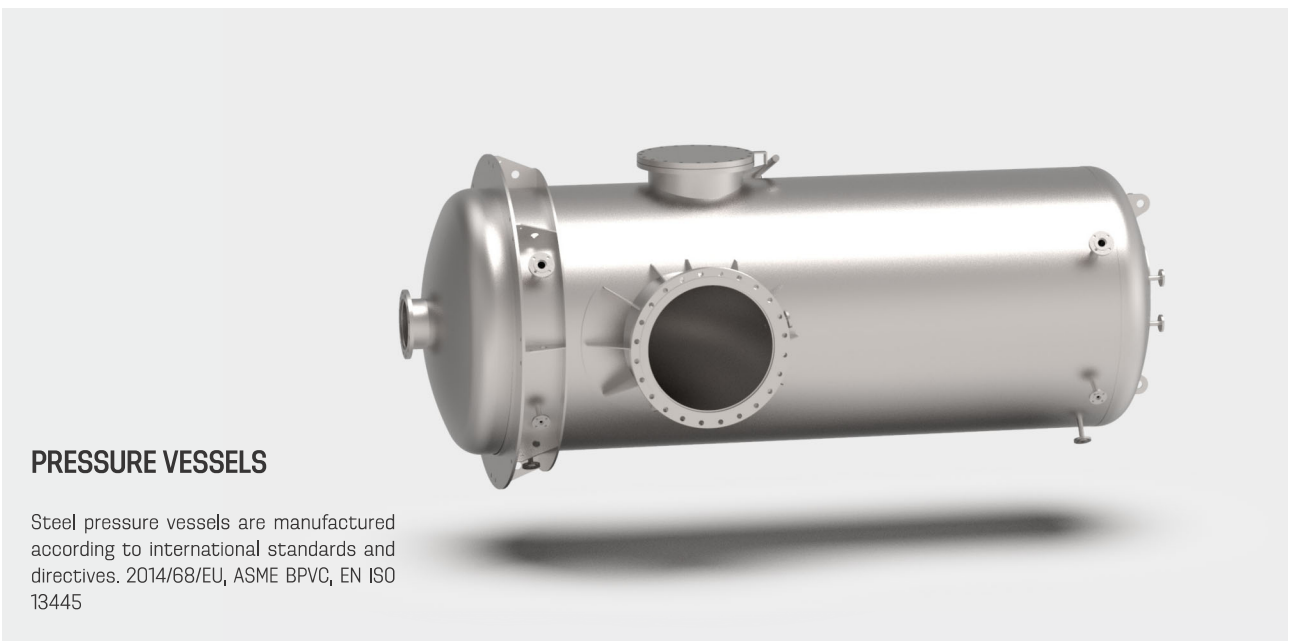
Pressurized and non-pressurized tanks for various liquids. It can be equipped with agitator and integrated level measurement.

Pressure and non-pressure vessels are designed and manufactured according to our customers' specifications and requirements. All products are made in compliance with applicable standards and government regulations or according to our customers' other requirements (e.g. ASME design code). We also supply accessories for these vessels, ventilation/exhaustion systems, pipelines, steel structures, mixers, sight glasses, level gauges, level switches, heating and insulation systems. All production processes are in compliance with PED 97/23 EC and 2014/68/EU requirements and manufacturing standards, e.g. CSN EN 13445-3, 13480, 12952 etc. Our company is certified to manufacture under the supervision of a notified body. Commonly used materials are 1.4301, 1.4571 stainless steel and P235GH, 16Mo3, P91 carbon steel. Other materials or teflon lining can also be used to ensure chemical resistance.



PLASTIC VESSELS

Various plastic reservoirs and structures are common across the industries. Vessel can be integrated with piping and measurement.



PRESSURE VESSELS

Steel pressure vessels are manufactured according to international standards and directives. 2014/68/EU, ASME BPVC, EN ISO 13445



Wide range of accessories ensures maximum efficiency and safety of the instruments. Emkometer is also able to customize products and solutions according to the needs of application. Turnkey delivery is also possible.

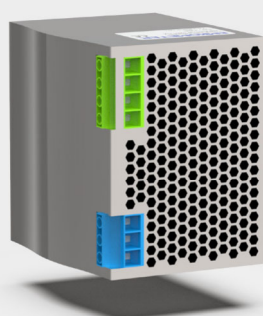
ACCESORIES

To make it work properly



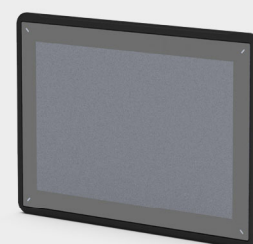
MECHANICAL

Flanges, manifolds, armatures, valves, mechanical structures, adapters, reducers, condensation chambers and much more.



ELECTRICAL

Power supplies, intrinsically safe barriers, transducers, junction boxes, heating and everything you might need for your instrument to work correctly.



CONTROL

Simple control systems, visualization, data acquisition systems.



DATALOGIO

Smart instruments nowadays read multiple variables that can be easily represented in form of charts and tables.

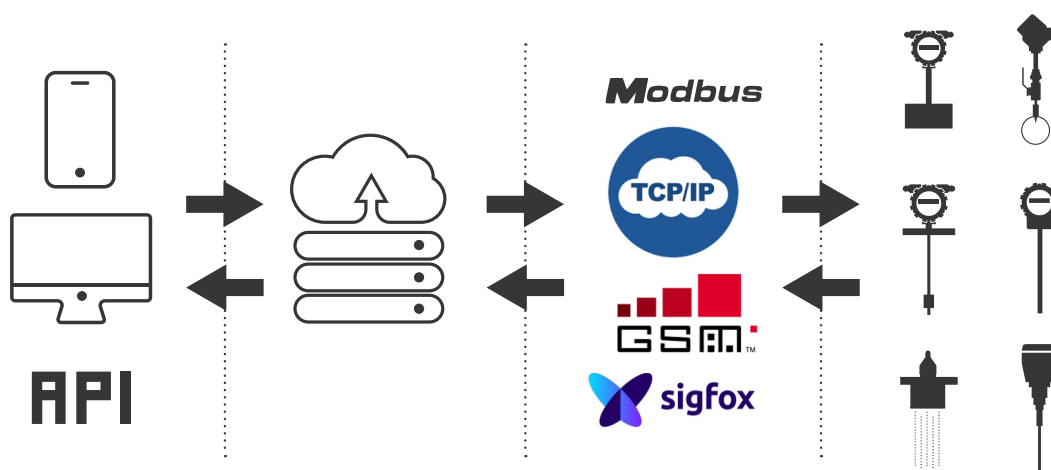
Is a data acquisition and management system. It enables 24/7 control of your sensors. Data can be easily managed and Datalogio keeps the track of the records and informs you if data is out of range.

Is a simple cloud based application with user friendly interface. It can be accessed anywhere on any device. Every customer has its own profile with its active role. Just log in and see your sensors, customize them with a name with the localization on the map, and with all your important notes. Mark comments, set-up tasks and export important data.

Takes advantage of modern technologies including IoT and Sigfox. Thanks to these technologies it is possible to remotely managed battery powered instruments in distant areas without power grid.

HIGHLIGHTS

- safety and reliability
- simple user interface
- scalable architecture with easy driver implementation
- API for 3rd party SW
- possibility of connection devices from different manufacturers
- low cost operation
- various data exports




Datalogio
Home
About
Contact
Demo User

Datalogio

Get control of all your sensors – online

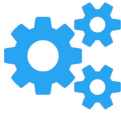
Datalogio is cloud based application, that enables remote 24/7 access to your sensors.
All you need to get control is internet connection and browser.

Beta! This system is currently in beta-version. If you want an early access, please contact us!




Simple and safe

Encrypted database architecture guarantees safe and fast access to your data. Google map interface makes it easy to locate your sensor. Intuitive user interface makes it easy to control.



Universal interface

TCP/IP or **GSM/GPRS** interface together with complex list of accessories and transducers makes it easy to connect to virtually any type of the sensor. This includes Modbus, M-BUS, RS-232, HART and analogue types of sensor. All your measurements at one place.



Get in control

Communication interface enables to configure your sensor, see list of errors, trend graphs and much more.

Data is yours! We just take care of them. You can access and export any data you want anytime.

Sensor detail

[Graphs](#)
[Data](#)
[Sensor info](#)
[Settings](#)



