

Flow Meter/Flow Switch

RW/PGS



Measurement principle

- Float measurement

Applications

- Cooling systems and circuits
- Light and heavy engineering
- Medical engineering
- Pharmaceutical industry
- Chemical industry
- Research and development

Features

- High reliability
- High switching accuracy
- Wide switching range
- Continuously adjustable switching point by the operator
- Threaded coupling (optional thread sizes)

Doc. no.: 222, en_cat_RW/PGS, 9/2022

Operation Data

Max. working pressure	10 bar
Pressure drop	0.02 – 0.8 bar
Max. temperature	100 °C
Accuracy:	±5 % of scale

Measurement Range

Type	Measurement range for water at 20 °C		
	l/min	gph	gpm
RW/PGS-4	0.2 – 4	3 – 63	
RW/PGS-6	0.5 – 6	8 – 95	
RW/PGS-8	0.5 – 8	8 – 127	
RW/PGS-14	0.5 – 14	8 – 222	
RW/PGS-22	2 – 22	32 – 350	
RW/PGS-28	1 – 28	16 – 444	
RW/PGS-45	1 – 45	15 – 710	
RW/PGS-80	2 – 80		0.5 – 21
RW/PGS-90	6 – 90		1.6 – 23.8
RW/PGS-110	8 – 110		1.6 – 29
RW/PGS-150	15 – 150		4 – 39.5
RW/PGS-220	50 – 220		13 – 58
RW/PGS-250	50 – 250		13 – 66

MATERIALS

Brass model - wetted parts

Spring:	1.4301
Measuring tube:	SIMAX
Sealing: EPDM)	NBR (optional FKM,
The other wetted parts:	nickel-plated brass

Stainless steel model - wetted parts

Spring:	1.4301
Measuring model:	SIMAX
Sealing:	FKM (optional NBR, EPDM)
The other wetted parts	1.4301/1.4404/1.4571

Non-wetted parts

Bushing:	Al anodized/pulverized
----------	------------------------

Non-wetted parts

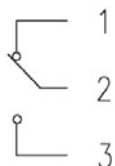
Bushing:	Al anodized/pulverized
----------	------------------------

El. contacts:	SPP change-over contact		SP1 a SP2 switches
Max. voltage	175 VAC	500 VAC *	400 VDC
Max. switching current	0,5 A	1.5 A	3 A
Max. contact load	10 W	50 W	100 W
Max. temperature	-40 to +130°C	-20 to +125°C	-40 to +120°C

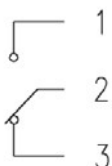
Contacts 1. and 2. closed at the minimum flow rate.

Contacts 2. and 3. closed at the maximum flow rate.

minimální průtok



maximální průtok



Current output 4-20 mA

Type of sensor:

Operative voltage:

Max. temperature:

Output:

Accuracy:

SP6M

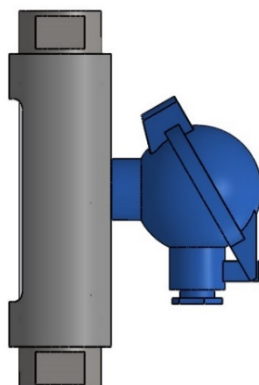
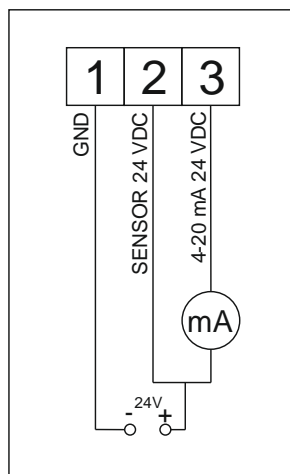
24 VDC (+/- 0.5V) (sensor power supply)

80 °C

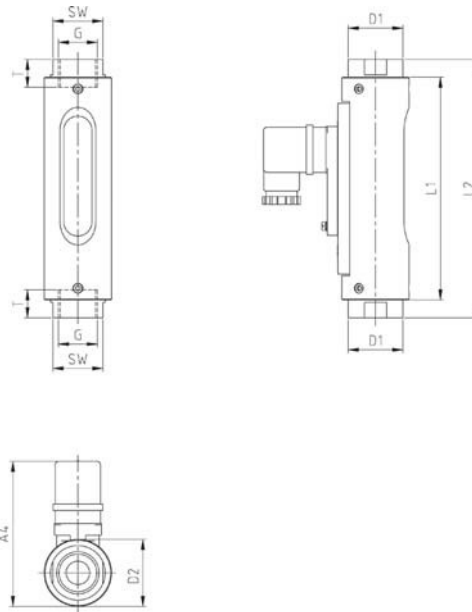
4-20mA, passive 12-36 V DC

2%

Typical wiring:



Technical Drawing



Type Overview

Type	Dimensions [mm]												
	G	DN	SW	L1	L2	T	D1	D2	A1	A2	A3	A4	[g]
RW/PGS-4													625
RW/PGS-6	1/4"	8	32	121	132	10	35	43	-	-	-	~96	625
	3/8"	10	32	121	135	11	35	43	-	-	-	~96	
RW/PGS-8	1/2"	15	32	121	135	14	35	43	-	-	-	~96	625
RW/PGS-14													625
RW/PGS-22	1/2"	15	32	121	135	14	35	43	-	-	-	~96	650
RW/PGS-28	1/2"	15	32	121	135	14	35	43	-	-	-	~96	650
RW/PGS-45	1/2"	15	32	143	161	14	35	43	-	-	-	~96	850
	3/4"	20	32	143	166	15	35	43	-	-	-	~96	850
RW/PGS-80	3/4"	20	41	143	163	15 ⁽³⁾	45	50	-	-	-	~104	1000
	1"	25	41	143	181	17	45	50	-	-	-	~104	1000
RW/PGS-90	3/4"	20	41	143	163	15	45	50	-	-	-	~104	1000
	1"	25	41	143	181	17	45	50	-	-	-	~104	1000
RW/PGS-110	3/4"	25	41	143	181	17	45	50	-	-	-	~104	1000
RW/PGS-150	1"	25	50	174	222	17	55	55	-	-	-	~109	1300
	1 1/4"	32	50	174	222	20	55	55	-	-	-	~109	1300
RW/PGS-220	1 1/4"	32	55	159	209	20	60	60	-	-	-	~113	1700
RW/PGS-250	1 1/4"	32	50	174	222	20	55	55	-	-	-	~109	1400

Optional NPT connection